

A photograph of two secondary school students, a boy and a girl, sitting at a desk in a classroom. They are both wearing school uniforms (dark blazers, white shirts, and patterned ties) and are smiling and looking towards the right. The girl is holding a gold pen. There are papers and a book on the desk in front of them. The background is slightly blurred, showing classroom shelves with books and a green container.

Secondary

Course Overview

Recruitment

What do I need to apply?

Necessary:

- Degree (min 2:2) preferably, but not exclusively, in teaching subject.

N.B. You may be advised to do a Subject Knowledge Enhancement course during the selection process, especially if your degree is not in your teaching subject.

- Grade 4 / C for GCSE English and Maths.

N.B. Qualifications must be achieved by course start date.

Desirable:

Experience working in schools.

Prerequisites post interview:

- DBS barring checks.
- Proof of qualifications.

What is the selection process?

- 'Formal' interview (approx 45 mins).
- Half-day faculty visit.
- Opportunity to meet course leaders and current trainees.



Who will support me?

In-school support:

- Subject Mentor
- ITT co-ordinator
- SCITT Hub Lead
- Professional Tutor
- Subject Specialist
- Hub Director
- ILTT staff



How much will I teach?

40% timetable by Christmas (approx. 6 hours over 3 days).

60% timetable by Easter (approx. 12 hours over 4 days).

80% by July (approx. 17 hours over 5 days).

What will I teach?

- Teaching must cover at least 2 key stages (usually KS3 + KS4).
- We will provide experience of KS5 wherever possible.
- All trainees will have a 1 long + 1 short placement.

How else will I gain experience?

Four intensive training placements in behaviour routines, delivering explanations, SEND and disciplinary literacy.

Practical

Training

What does the training programme look like?

Taught programme

Research and evidence informed training delivered by outstanding teachers and leaders.

Sessions

Mondays and Fridays in term 1, Fridays in term 2 and some of term 3.

Content

- Setting expectations
- Cognitive Science
- Establishing routines
- Lesson planning
- Explaining
- Questioning
- Modelling
- Marking + Feedback
- Behaviour Management
- Adaptive teaching
- Active Engagement
- Challenge
- Oracy
- Literacy
- Homework
- The role of the tutor
- Data management
- Managing workload
- Applying for jobs
- SEND
- Diversity, Equity + Inclusion



How do we support subject knowledge?

Our Subject provision:

Continuous review of Subject Knowledge Audit to inform individualised programme.

Usually 9 x subject specific training days which include observations of best practice.

Small group and 1:1 guidance from designated subject specialists.

Subject specialist support from the National Association of School Based Teacher Training (NASBTT).

Access to texts, books, research and blogs which support best practice.

Networking opportunities with other trainees teaching the same discipline.

Subject Knowledge

PGCE

Who accredits the PGCE?

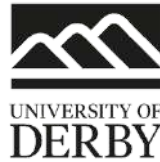
We work with the University of Derby who tailors the PGCE to our offer ensuring it meshes with the taught programme and in-school practice.

Trainees complete a number of assignments over the course of the training programme, one of which, is a summative essay.

Full support from the university throughout including access to the library, facilities and student services.

Support with academic writing from the university staff
Access to Masters credits for level 7 assignments.

Rigorous and supportive assessment processes leading to high pass rates.



How is the course assessed?

Accreditation:

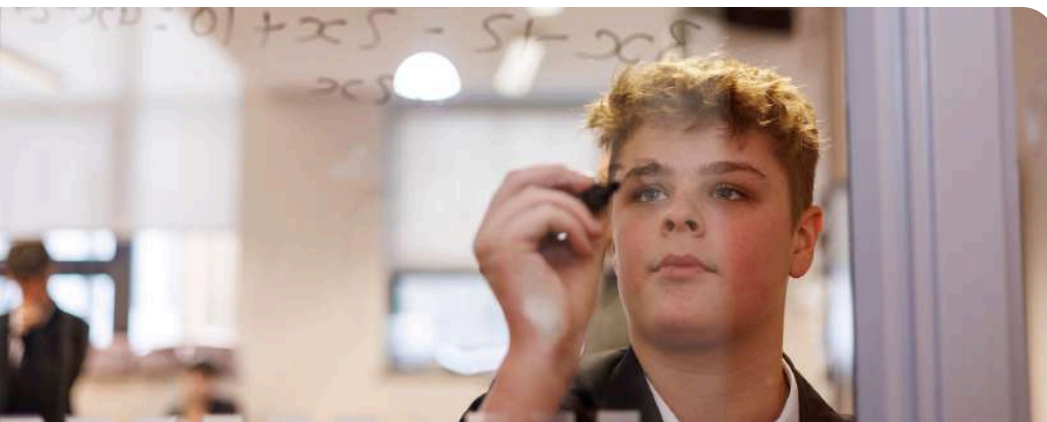
- Trainees maintain a digital log of all activities and assessments.
- Regular observation and feedback build picture of progress.
- Formal observation per week.
- Each trainee has a dedicated professional tutor supporting progress and assessment.

Summative Assessment

QTS is awarded by Inspiring Leaders, an Outstanding SCITT Provider.

PGCE accredited by the University of Derby.

Assessment



Financial Support

Student Finance

On our course, trainees are entitled to the same financial support as other teacher training courses. Those from the UK or EU are eligible for student loans in order to help cover tuition fees and maintenance.

Bursaries and Scholarships

For 2026/27 the following bursaries are available:

- £29,000 in chemistry, computing, mathematics and physics.
- £20,000 in design and technology and languages (including ancient languages).
- £5,000 in biology and geography.

You may be applicable to apply for the following scholarships:

- £31,000 for chemistry, computing and physics.
- £22,000 for French, German and Spanish (no other languages).

Are you an international student?

To find out more about funding available, visit the [Gov.uk](https://www.gov.uk) website.

When might I need to do an SKE?

You might need to complete a subject knowledge enhancement (SKE) course before beginning your teacher training to bolster your subject expertise.

This could be necessary if you have (one or more of the following):

- Completed your degree over 5 years ago.
- A different but related degree to the subject you wish to teach.
- An A level but not a degree in the subject you want to teach.
- An unrelated degree but relevant professional experience.
- Studied for a languages degree but need to improve proficiency in either a primary language, a secondary language, or both to a suitable level for teaching in schools.

Which SKE courses are available?

SKE courses are currently available in 5 secondary subjects:

- chemistry
- computing
- modern foreign languages
- mathematics
- physics

Subject Knowledge Enhancement (SKE)

n?

e.
ns d'os humains.
nbole de Paris.

ui s'appelle

Paris is one of the top tourist destinations in the world. It has something for everyone: history, art, fashion, music, film, theatre, shopping ... And some of the most famous monuments in the world. Surprisingly, though, the most visited monument in Paris is not the Eiffel Tower. What do you think it is?



célèbre famous
os bones



Notre-Dame



Catacombes

B of the BANC



If you have any questions, contact us by sending an email to info@iltoday.co.uk, and our friendly team will be in touch.

 **inspiring|leaders**
teacher training

www.inspiringleadersscitt.com

